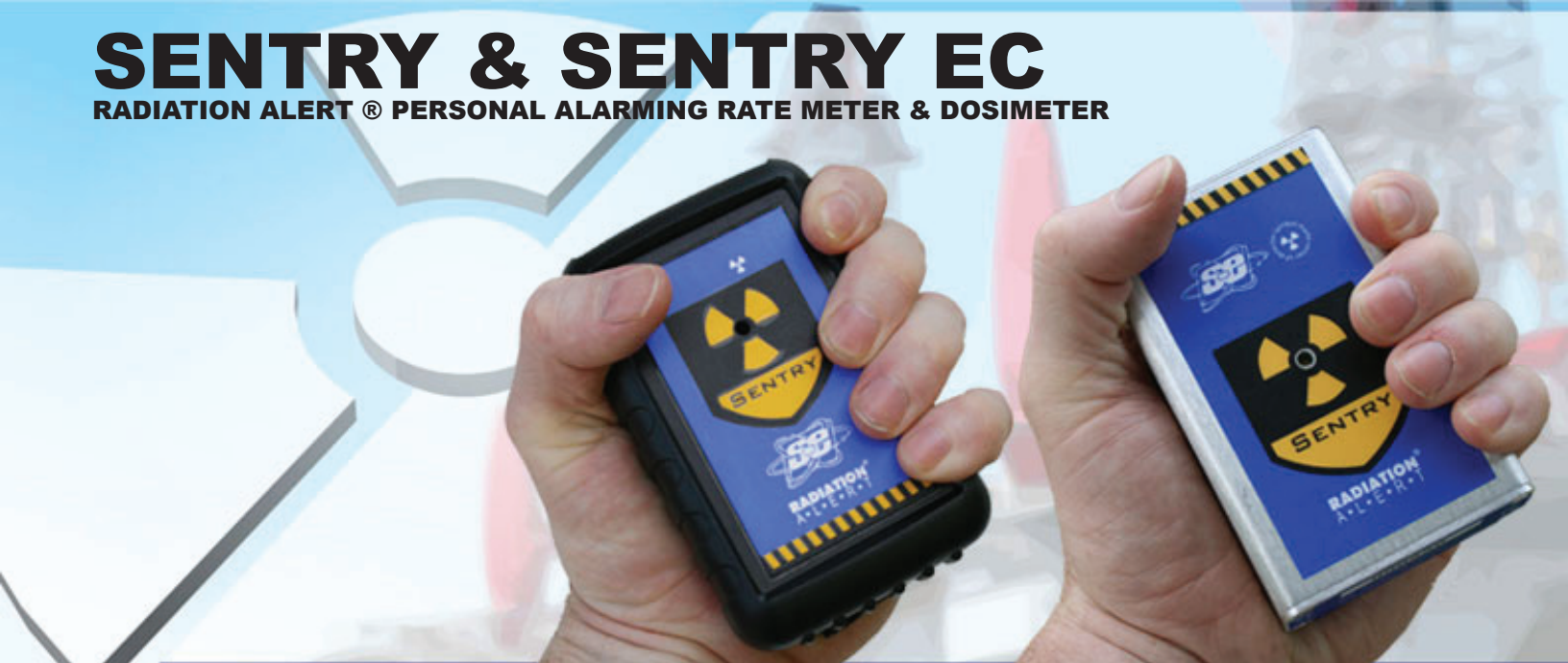


SENTRY & SENTRY EC

RADIATION ALERT® PERSONAL ALARMING RATE METER & DOSIMETER



The Radiation Alert® Sentry is a Personal Alarming Dosimeter / Ratemeter designed to ensure the safety of personnel that work in occupations with potential x-ray or gamma exposure.

The pocket sized unit has built in memory for recording data points for tracking accumulated exposure. The Sentry Software option enables you to generate incident reconstruction for analysis. The software also permits you to easily set the vibrating and audio alert to your desired levels for dose and dose rate.

Use the audio switch to choose between audible clicks or a discreet silent mode. The Sentry can be augmented with the use of headphones.

Detector

Sentry: Uncompensated GM Tube

Sentry EC: Energy Compensated GM Tube

Dose Rate Linearity

Better than $\pm 15\%$
up to 15 R

Energy Response

Sentry: down to 30 KeV

Sentry EC: down to 20 KeV

Gamma Sensitivity

1.5 cps/mR/hr (Co^{60})



Switch Functions

Power, Audio Clicks On/Off, Vibrate & Audible Alert, Silent Vibrating Only Alert

Operating Range

Dose Rate: 0.1 - 15 R/hr

Dose: 0.1 - 15 R/hr

Accumulated Dose: 0.1 - 65 R

Audible Alarms

Accumulated Dose & Dose Rate. 90db @ 1 ft.

Alarm Thresholds

Default: Dose 500 mR / Rate 50 mR/hr

Sievert Option:

Dose 5000 μSv / Rate 500 $\mu\text{Sv/hr}$

Alarm and warning levels are user selectable with Optional Sentry Software.

Connectors

Sentry: Headphone Connector, Internal Serial Header connector (cable included w/ Software)

Sentry EC: mini-USB.

Power Requirements

9-Volt Battery. Approx.

1500 hrs at normal background.

Temperature Range

-20° - $+50^{\circ}\text{C}$ (-4° - $+122^{\circ}\text{F}$)

Weight

Sentry: 88 g (3.1 oz.)

8.3 oz w/ optional Boot

Sentry EC: 228 g (8 oz.)



SE. INTERNATIONAL INC



P.O. Box 39, 436 Farm Rd. Summertown, TN 38483

1-800-293-5759

Fax: 931-964-3564

www.seintl.com

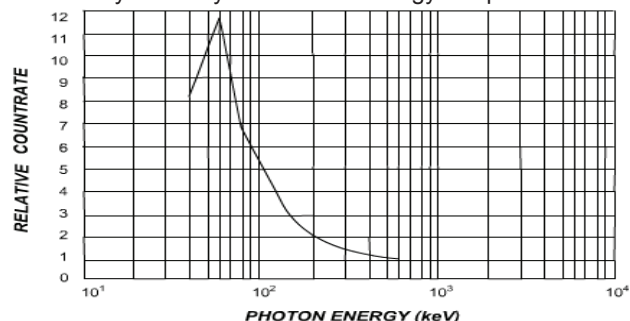
radiationinfo@seintl.com

RADIATION
A • L • E • R • T

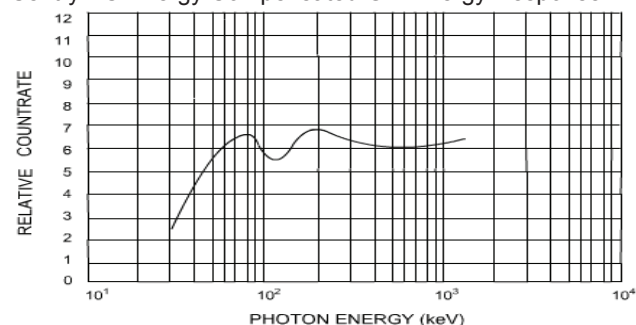
SENTRY & SENTRY EC

RADIATION ALERT® PERSONAL ALARMING RATE METER & DOSIMETER

The Sentry & Sentry Xtreme GM Energy Response

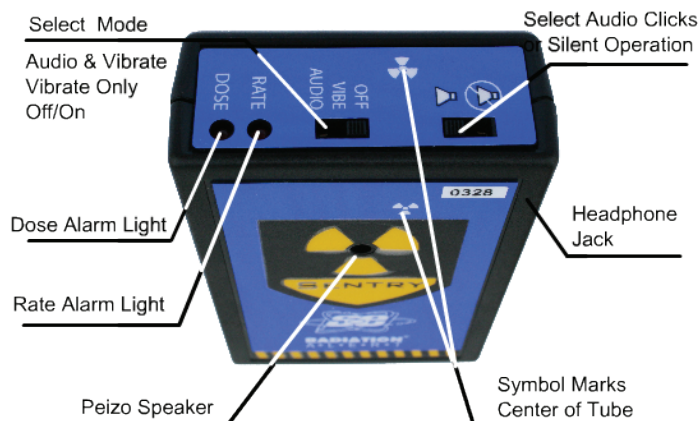


Sentry EC Energy Compensated GM Energy Response

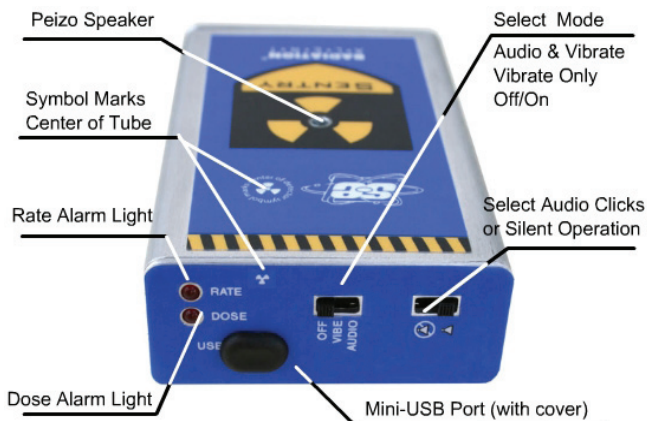


The Sentry vs. The Sentry EC

The Sentry has a serial header located in the battery compartment, a headphone jack, non-compensated GM tube, and the enclosure is made of impact resistant ABS Plastic. The Sentry EC has a mini-USB port located on the end panel of the instrument, no headphone jack, an energy compensated GM tube, and an aluminum enclosure. Both models come with a 1 year limited warranty.



The Sentry: 3.8 x 2.4 x 1 in (96.5 x 70 x 25.4 mm)

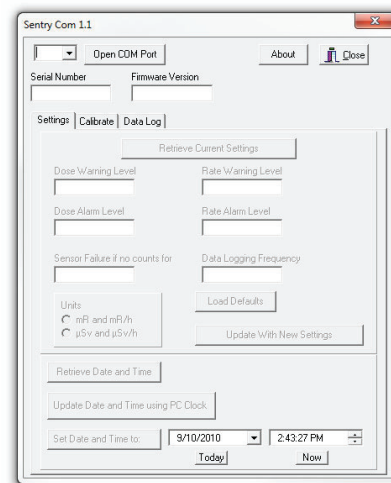


The Sentry EC: 4.125 X 2.62 X 1.1 in (104.8 x 66.5 x 27 mm)

SentryCom Software

The optional SentryCom Software enables you to easily integrate The Sentry into your radiation safety program by allowing you to select the thresholds for dose and dose rate alarms/warnings. You can set the Cal Factor, and the data logging frequency, and download the accumulated dose data as a text file. The report includes a delimited time and date stamp, exposure, and power cycle identifiers, for easy recording and incident analysis.

The SentryCom Software comes with a Serial or USB cable depending on the model.



SE. INTERNATIONAL INC



P.O. Box 39, 436 Farm Rd. Summertown, TN 38483

1-800-293-5759

Fax: 931-964-3564

www.seintl.com

radiationinfo@seintl.com

RADIATION A • L • E • R • T