

NOISE ENCLOSURE FOR VACUUM PUMPS : DBL-MS40



PRODUCT OVERVIEW

- Noise reduction performance : - 15 db(A) (80% reduction in noise perception)
- Heat exchange controlled by six internal silent fans 120 mm (4,72 in)
- Efficient air circulation is guaranteed at 600 m3/h to keep optimal acoustic insulation
- Worldwide electrical compatibility [enclosures are supplied with European, US, Japanese or UK plugs]



Dimensions	External Dimensions		Internal Dimensions	
	CM	INCH	CM	INCH
Depth	74	29.1	63	24.8
Width	90	35.4	79	31.1
Height	50	19.7	45	17.7
Height w/ oil tray	59	23.2	46.7	18.4
Noise enclosure weight 45 kg 99.20 lbs				

EASY

to install : no downtime (no need to "shut-off vacuum")

- oil change can be performed without removing the vacuum pump
- access for pump servicing and ballast
- visual check for operation



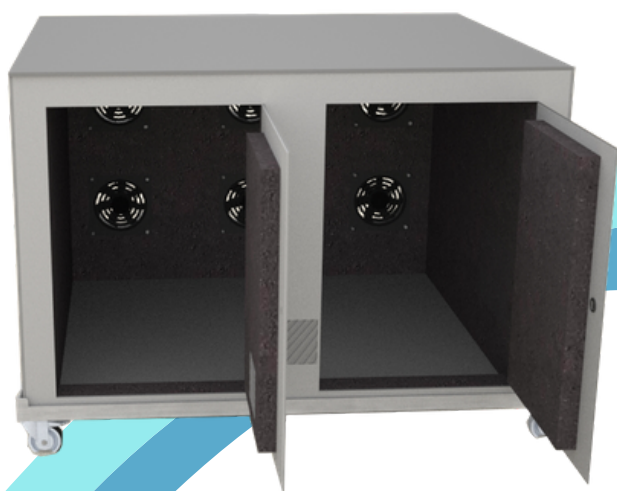
Top cover can be easily removed



DETAILED TECHNICAL SPECIFICATIONS



TWO FRONT DOORS



EASY VISUAL CHECK FOR OPERATION (Green LED)



PIPE AND CABLE GO THROUGH A POLYPROPYLENE BRUSH



LOCKABLE CONNECTOR



AVAILABLE OPTIONS

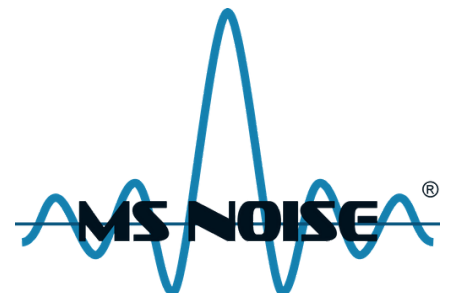


OVERHEATING ALARM



- In case of any air intake or air exhaust obstruction, the temperature inside the noise enclosure could well exceed the limits set by vacuum pump manufacturers.
- Check the LEDS ! if the temperature goes above an acceptable limit, the alarm will sound (a red led will come on and an audible continuous alarm will start ~ 90 dB)
- Alarm Test function: test switch button available to ensure batteries are charged and alarm is working. When the switch is pushed, the red LED will come on and a continuous audible sound will start if the system is operating correctly.
- Requires 2 x 1.5 AA Batteries - independent from noise enclosure main power supply.

AVAILABLE OPTIONS



OIL TRAY ON WHEELS



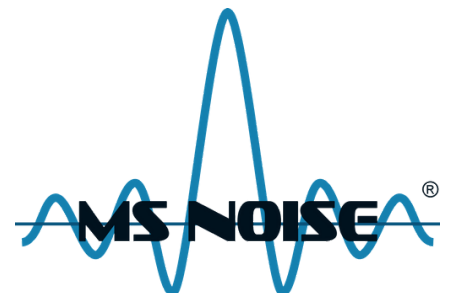
With the stainless-steel oil tray you can conveniently accommodate your vacuum pump and prevent any mess. The **MS NOISE** enclosure is simply placed on the tray, so both the enclosure (with the pump inside) are movable.

This oil tray is equipped with four vibration absorbing caster wheels, which reduces vibration transmission through the floor.

Two of the four wheels are equipped with brakes. Stainless-steel allows for easy cleaning and in case of any leakage, the tray will act as a container and oil will not spread on to the floor.

Oil tray weight : 18kg / 39.68 lbs

AVAILABLE OPTIONS



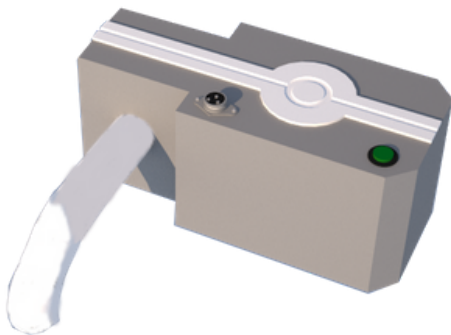
OIL DRAIN

Fast, easy and clean oil change process !

Vacuum pump manufacturers recommend regular oil changes to prevent damage to the roughing pump and to extend pump life-time. Changing the oil can be awkward with possible oil leaks and heavy pumps making access and moving difficult. MS Noise have therefore designed a special oil drain kit and oil pump to save you time on maintenance and to carry out oil changes in a convenient and mess-free way.

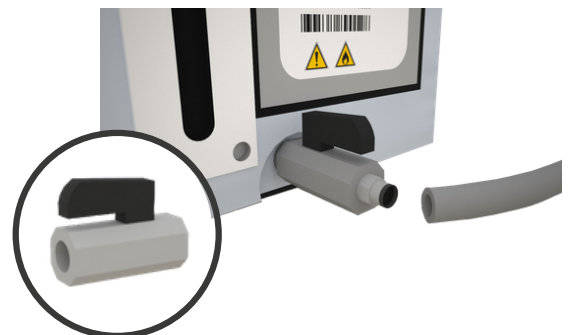
OIL DRAIN PUMP

(ODP)



OIL DRAIN KIT

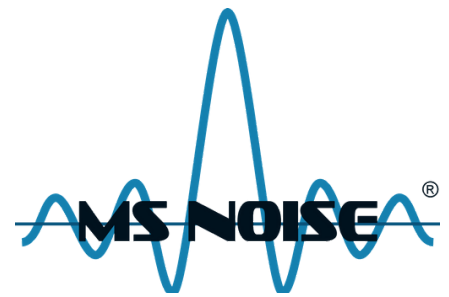
(ODK)



Oil change kit for easy vacuum pump oil change. **Oil drain kit includes :**

- Adaptor to your pump
- Valve
- Quick connector
- 30cm pipe
- Teflon roll

SUMMARY



Description	Part number
NOISE ENCLOSURE	DBL-MS40
OVERHEATING ALARM TEMPERATURE	DBL-ALA-MS40
OIL TRAY ON CASTER WHEELS	DBL-PAN-MS40
OIL DRAIN PUMP	ODP
OIL DRAIN KIT	ODK

CLICK ON THIS PICTURE TO SEE
WHAT **MS NOISE** CAN DO FOR YOU



Scantec Nordic

Analys & Mätteknik

031 336 90 00 • www.scantecnordic.se



Follow **MS Noise** on LinkedIn

msnoise.com
contact@msnoise.com

MS Noise
19 rue de Sancey
89100 Sens
France

DBL-MS40
V1.0
04/21

Page 6 / 6