



Agilent **CrossLab**

Supplies for
Waters HPLC Systems

Quick Reference Guide



The Measure of Confidence



Agilent Technologies

Detector Lamps, 1/pk

| Model | Description | Similar to OEM Part No. | Agilent CrossLab Part No. |
|--|---------------------------------------|-------------------------|---------------------------|
| 2996 Photodiode Array Detector 996 Photodiode Array Detector ACQUITY UPLC 2996 Photodiode Array Detector* | Long-life deuterium lamp, 2,000 hours | WAT052586 | 8005-0705* |
| 2487 Dual Wavelength Absorbance Detector 2488 Multichannel Absorbance Detector ACQUITY TUV Detector UPLC TUV Detector | Long-life deuterium lamp, 2,000 hours | WAS081142 | 8005-0704 |
| 486 Tunable UV/Visible Absorbance Detector LC Module 1 | Long-life deuterium lamp, 2,000 hours | 700000356 WAT052666 | 8005-0702 |

*Not for use with ACQUITY H-Class detectors



Long-life deuterium lamp, 8005-0705



Long-life deuterium lamp, 8005-0704



Long-life deuterium lamp, 8005-0702

Autosampler Syringes, 1/pk

| Model | Volume (µL) | Description | Needle Gauge/Length (mm)/Tip | Similar to OEM Part No. | Agilent CrossLab Syringe | Agilent CrossLab Replacement Needle | Similar to OEM Part No. | Agilent CrossLab Replacement Plunger |
|---|-------------|--|------------------------------|-------------------------|--------------------------|-------------------------------------|-------------------------|--------------------------------------|
| 2777 Compact Sample Manager | 10 | Fixed needle | 22s/51/3 | 430000859 | 8010-0445* | | 700002212 | 8010-0457, 10/pk |
| 2777 Sample Manager | 25 | Fixed needle, gas tight | 22s/51/3 | 430000861 | 8010-0441 | | 700002213 | 8010-0458, 10/pk |
| | 100 | Fixed needle, gas tight | 22s/51/3 | 430000864 | 8010-0442* | | 700002214 | 8010-0459, 10/pk |
| | | Fixed needle, gas tight | 22/51/3 | 430000863 | 8010-0446* | | 700002214 | 8010-0459, 10/pk |
| | 250 | Fixed needle, gas tight | 22/51/3 | 430000865 | 8010-0467 | | 700002215 | 8010-0456, 10/pk |
| | 500 | Fixed needle, gas tight | 22/51/3 | 430000866 | 8010-0468 | | 700002216 | 8010-0460, 10/pk |
| | 1,000 | Fixed needle, gas tight | 22/51/3 | 430000867 | 8010-0443 | | 700002217 | 8010-0455, 10/pk |
| | 2,500 | Fixed needle, gas tight | 22/51/3 | 430000868 | 8010-0444 | | 430000868 | 8010-0448, 1/pk |
| 510 HPLC Pump 515 HPLC Pump 600 MultiSolvent Delivery System CapLC System CapLC XE System | 10000 | Luer Lock | No needle | WAT025559 | 8005-0414 | | | |
| 600 MultiSolvent Delivery System Rheodyne Injector | 25 | Removable needle, gas tight | 22s/51/3 | WAT033381 | 8005-0416 | | | 8005-0422 |
| 2690 Separations Module 2690D Dissolution Separations Module | 25 | Chem (1/4-28 UNF screw threads), gas tight | No needle | WAT077343 | 8005-0420 | | | |
| 2695 Separations Module 2695D Dissolution Separations Module 2790 Separations Module 2795 Separations Module LC Module 1 717/717plus Autosampler | 250 | Chem (1/4-28 screw threads UNF), gas tight | No needle | WAT073109 | 8005-0419 | | | |
| Rheodyne Injector | 100 | Removable needle, gas tight | 22s/51/3 | WAT033383 | 8005-0417 | 8005-0418, 6/pk | | 8005-0423 |

*Barrel od is 6.7 mm. All other 10, 25, and, 100 µL syringes have 7.9 mm od.

The cross references to the original equipment manufacturer (OEM) part numbers listed here serve as a recommendation that the Agilent CrossLab products are viable alternatives to OEM products. CrossLab products are compatible with the corresponding OEM instruments, although in some cases, the CrossLab products may have slightly different designs as compared to the OEM counterparts. All CrossLab supplies are backed by Agilent's 90-day money-back warranty.



CrossLab syringe needle, 22s/51/3, 8005-0418



CrossLab syringe, PTFE-tipped plunger, 25 µL, 8005-0420



CrossLab syringe, gas tight, 8005-0417

Contact your Agilent Authorized Distributor or learn more at www.agilent.com/chem/CrossLabHPLC

| Pump Supplies | | | | | |
|---|--|------|-------------------------|---------------------------|--|
| Model | Description | Unit | Similar to OEM Part No. | Agilent CrossLab Part No. | |
| Plungers and Seals | | | | | |
| 2690 Separations Module 2690D Dissolution Separations Module 2695 Separations Module 2695D Dissolution Separations Module 2790 Separations Module 2795 Separations Module 2796 Bioseparations Module | Sapphire plunger assembly, standard | 1/pk | WAT270959 | 8005-0538 | |
| 2690 Separations Module 2690D Dissolution Separations Module 2695 Separations Module 2695D Dissolution Separations Module | Plunger seals, clear | 2/pk | 700001326 | 8005-0514 | |
| 2690 Separations Module 2690D Dissolution Separations Module 2695 Separations Module 2695D Dissolution Separations Module 2790 Separations Module 2795 Separations Module Alliance GPC/V 2000 Systems | Plunger seal replacement kit, standard, yellow | 2/pk | WAT270938 | 8005-0535 | |
| 2690 Separations Module 2690D Dissolution Separations Module 2695 Separations Module 2695D Dissolution Separations Module 2790 Separations Module 2795 Separations Module | Plunger seal replacement kit, black | 2/pk | WAT271066 | 8005-0541 | |
| 2690 Separations Module 2690D Dissolution Separations Module 2695 Separations Module 2695D Dissolution Separations Module 2790 Separations Module 2795 Separations Module Alliance GPC/V 2000 Systems | Face seals replacement kit | 4/pk | WAT270939 | 8005-0536 | |
| 2690 Separations Module 2690D Dissolution Separations Module 2695 Separations Module 2695D Dissolution Separations Module 2790 Separations Module 2795 Separations Module Alliance GPC/V 2000 Systems | Seal wash face seal kit | 1/pk | WAT271017 | 8005-0539 | |
| 2796 Bioseparations Module | Seal wash, plunger seal | 4/pk | 700002258 | 8005-0516 | |
| 2796 Bioseparations Module | Plunger seal, standard | 2/pk | 700002257 | 8005-0515 | |
| 2690 Separations Module 2690D Dissolution Separations Module 2695 Separations Module 2695D Dissolution Separations Module 2790 Separations Module 2795 Separations Module Alliance GPC/V 2000 Systems | Seal wash plunger seal replacement kit | 2/pk | WAT271018 | 8005-0540 | |
| 510 HPLC Pump 600 MultiSolvent Delivery System | Sapphire plunger | 1/pk | WAT025656 | 8005-0527 | |
| 610 PowerLine Isocratic Pump LC Module 1 | Oriented sapphire plunger | 1/pk | WAT069511 | 8005-0533 | |

(Continued)

The cross references to the original equipment manufacturer (OEM) part numbers listed here serve as a recommendation that the Agilent CrossLab products are viable alternatives to OEM products. CrossLab products are compatible with the corresponding OEM instruments, although in some cases, the CrossLab products may have slightly different designs as compared to the OEM counterparts. All CrossLab supplies are backed by Agilent's 90-day money-back warranty.



Sapphire plunger assembly, 8005-0538



Plunger seal replacement kit, 8005-0535



Plunger seal replacement kit, 8005-0541



Face seals replacement kit, 8005-0536



Seal wash face seal kit, 8005-0539

Contact your Agilent Authorized Distributor or learn more at www.agilent.com/chem/CrossLabHPLC

| Pump Supplies | | | | | |
|---|---|------|-------------------------|---------------------------|--|
| Model | Description | Unit | Similar to OEM Part No. | Agilent CrossLab Part No. | |
| Plungers and Seals | | | | | |
| 510 HPLC Pump 515 HPLC Pump 600 MultiSolvent Delivery System LC Module 1 | Plunger seal, graphite-filled PTFE (GFP), black | 1/pk | WAT026613 | 8005-0529 | |
| 510 HPLC Pump 515 HPLC Pump 600 MultiSolvent Delivery System 610 PowerLine Isocratic Pump LC Module 1 | Plunger seal, black, 225 µL | 1/pk | WAT026644 | 8005-0530 | |
| 616 LC System 626 LC System | Sapphire plunger | 1/pk | WAT031788 | 8005-0531 | |
| 1515 HPLC Pump 1525 HPLC Pump 515 HPLC Pump | Sapphire plunger assembly | 1/pk | WAS207069 | 8005-0523 | |
| 1515 HPLC Pump | Plunger seal, clear | 1/pk | WAT022934 | 8005-0524 | |
| 1525 HPLC Pump | Plunger seal, clear | 4/pk | WAT022946 | 8005-0525 | |
| 510 HPLC Pump 515 HPLC Pump 600 MultiSolvent Delivery System 610 PowerLine Isocratic Pump LC Module 1 | | | | | |
| Check Valves and Cartridges | | | | | |
| 2690 Separations Module 2690D Dissolution Separations Module 2695 Separations Module 2695D Dissolution Separations Module 2790 Separations Module 2795 Separations Module Alliance GPC/V 2000 Systems | Check valve cartridge replacement kit | 2/pk | WAT270941 | 8005-0537 | |
| 626 LC System | Check valve cartridge | 1/pk | WAT024120 | 8005-0526 | |
| 1515 HPLC Pump 1525 HPLC Pump 2695 Separations Module 2695D Dissolution Separations Module 2795 Separations Module 510 HPLC Pump 515 HPLC Pump 600 MultiSolvent Delivery System 610 PowerLine Isocratic Pump LC Module 1 | Check valve cartridge | 2/pk | 70000254 | 8005-0513 | |
| 1525 HPLC Pump 2695 Separations Module 2695D Dissolution Separations Module 2795 Separations Module 515 HPLC Pump 600 MultiSolvent Delivery System | Check valve cartridge | 1/pk | 700002399 | 8005-0508 | |
| 1515 HPLC Pump 1525 HPLC Pump 515 HPLC Pump 600 MultiSolvent Delivery System LC Module 1 | Cartridge check valve system | 2/pk | 70000253 | 8005-0512 | |
| 510 HPLC Pump 515 HPLC Pump 600 MultiSolvent Delivery System 610 PowerLine Isocratic Pump LC Module 1 | Outlet check valve rebuild kit, 225 µL | 2/pk | WAT026014 | 8005-0528 | |



Sapphire plunger assembly, 8005-0523



Check valve cartridge replacement kit, 8005-0537

The cross references to the original equipment manufacturer (OEM) part numbers listed here serve as a recommendation that the Agilent CrossLab products are viable alternatives to OEM products. CrossLab products are compatible with the corresponding OEM instruments, although in some cases, the CrossLab products may have slightly different designs as compared to the OEM counterparts. All CrossLab supplies are backed by Agilent's 90-day money-back warranty.

Contact your Agilent Authorized Distributor or learn more at www.agilent.com/chem/CrossLabHPLC

Detector Supplies

| Model | Description | Unit | Similar to OEM Part No. | Agilent CrossLab Part No. |
|--------------------------------|-------------|------|-------------------------|---------------------------|
| 2996 Photodiode Array Detector | Cell gasket | 2/pk | WAT057924 | 8005-0532 |
| 996 Photodiode Array Detector | | | | |

Valve Replacement Parts, 1/pk

| Model | Description | Similar to OEM Part No. | Agilent CrossLab Part No. |
|---|---|-------------------------|---------------------------|
| 2767/2747 Sample Manager Column/Fluidics Organizer | Stator, 6 port, stainless steel | 700001560 | 8005-0601 |
| Rheodyne 7725(i) Injector | Vespel rotor seal, for Rheodyne 7725(i) | WAT055946 | 8005-0604 |
| 626 LC System Rheodyne 9125 Injector | Tefzel rotor seal | WAT015781 | 8005-0603 |
| 2700 Sample Manager | Rotor seal | WAT272615 | 8005-0605 |
| 2707 Autosampler | Rotor seal | 700003851 | 8005-0602 |

Sample Loops, 1/pk

| Model | Volume (µL) | Material | Similar to OEM Part No. | Agilent CrossLab Part No. |
|---|-------------|-----------------|-------------------------|---------------------------|
| 2690 Separations Module | 100 | Stainless steel | 430001194 | 8005-0840 |
| 2690D Dissolution Separations Module | | | | |
| 2695 Separations Module | | | | |
| 2695D Dissolution Separations Module | | | | |
| 2695 Separations Module | 200 | Stainless steel | 430001630 | 8005-0841 |
| 2695D Dissolution Separations Module | | | | |
| 2796 Bioseparations Module | 20 | PEEK | 430000782 | 8005-0838 |
| 2796 Bioseparations Module | 100 | PEEK | 430000783 | 8005-0839 |
| 2707 Autosampler CapLC System CapLC XE System | 5 | Stainless steel | 700000683 | 8005-0843 |
| 2707 Autosampler | 10 | Stainless steel | 700003872 | 8005-0845 |
| 2707 Autosampler CapLC System CapLC XE System | 20 | Stainless steel | 700000680 | 8005-0842 |
| 2707 Autosampler | 50 | Stainless steel | 700003928 | 8005-0846 |
| 2707 Autosampler CapLC System CapLC XE System | 100 | Stainless steel | 700000685 | 8005-0844 |



Rheodyne stator, 8005-0601



Vespel rotor seal, for Rheodyne 7725(i), 8005-0604



Tefzel rotor seal, 8005-0603

The cross references to the original equipment manufacturer (OEM) part numbers listed here serve as a recommendation that the Agilent CrossLab products are viable alternatives to OEM products. CrossLab products are compatible with the corresponding OEM instruments, although in some cases, the CrossLab products may have slightly different designs as compared to the OEM counterparts. All CrossLab supplies are backed by Agilent's 90-day money-back warranty.

Contact your Agilent Authorized Distributor or learn more at www.agilent.com/chem/CrossLabHPLC

Performance Maintenance Kits

| Model | Description | Kit Contents | Similar to OEM Part No. | Agilent CrossLab Part No. |
|--|---|---|-------------------------|---------------------------|
| Performance Maintenance Kits for Separation Modules | | | | |
| 2690 Separations Module 2690D Dissolution Separations Module 2695 Separations Module 2695D Dissolution Separations Module | 2690/95 Performance Maintenance Kit | Contains 2 sapphire plungers, 2 seal wash plunger seal kits, 2 plunger seals replacements kits (standard, yellow), 4 wash tube seal replacement kits, 1 battery, 1 diffuser assembly, 4 face seal replacement kits, 4 solvent reservoir filters (10 µm), 1 syringe (250 µL), 1 precolumn filter insert assembly, 2 check valve cartridges, 1 seal pack rebuild kit with needle, 1 wash tube seal, 1 sealwash tube, 1 PTFE washer, 1 filter retainer, 1 lower wash seal frit, 1 needlewash frit, 1 TFE washer, 1 needle assembly, 2 injector seals, 1 stainless steel ferrule (1/16 in), 1 compression screw | WAT270944 | 8005-0915 |
| 2690 Separations Module 2690D Dissolution Separations Module 2695 Separations Module 2695D Dissolution Separations Module | Seal Pack Rebuild Kit With Needle | Contains 1 wash tube seal, 1 sealwash tube, 1 PTFE washer, 1 filter retainer, 1 lower wash seal frit, 1 needlewash frit, 1 TFE washer, 1 needle assembly, 2 injector seals, 1 stainless steel ferrule (1/16 in), 1 compression screw | WAT271019 | 8005-0916 |
| Performance Maintenance Kits for Pumps | | | | |
| 515 HPLC Pump | 515 Pump Performance Maintenance Kit | Contains 2 sapphire plunger assemblies, 2 plunger seals, 1 solvent reservoir filter (10 µm), 1 sparge diffuser, 4 check valve cartridges | WAT052587 | 8005-0913 |
| 600 MultiSolvent Delivery System 610 PowerLine Isocratic Pump | 600 Pump Performance Maintenance Kit | Contains 2 sapphire plungers, 2 plunger seals, 4 solvent reservoir filters (10 µm), 4 check valve cartridges, 1 reference valve rebuild kit, 1 inlet manifold rebuild kit, 4 sparge diffusers | WAT052675 | 8005-0930 |
| 616 LC System | 616 LC Performance Maintenance Kit | Contains 2 sapphire plungers, 1 plunger seal kit (ultra high molecular weight polyethylene, yellow), 4 check valve cartridges, 4 sparge diffusers, 4 solvent reservoir filters (10 µm) | WAT052672 | 8005-0928 |
| 626 LC System | 626 LC Performance Maintenance Kit | Contains 2 sapphire plungers, 2 plunger seals (ultra high molecular weight polyethylene, yellow), 4 solvent reservoir filters (10 µm), 4 check valve cartridges, 4 sparge diffusers | WAT052673 | 8005-0929 |
| 1515 HPLC Pump | 1515 Pump Performance Maintenance Kit | Contains 2 sapphire plungers, 2 plunger seals, 4 check valve cartridges, 1 reference valve rebuild kit, 1 solvent reservoir filter (10 µm) | 201000113 | 8005-0925 |
| 1525 HPLC Pump | 1525 Pump Performance Maintenance Kit | Contains 4 sapphire plungers, 4 plunger seals, 8 check valve cartridges, 1 reference valve rebuild kit, 2 solvent reservoir filters (10 µm) | 201000114 | 8005-0926 |
| 616 LC System 626 LC System | Plunger and Wash Seal Rebuild Kit | Contains parts for both pump heads, 2 plunger seals, 2 plunger wash seals, 2 retainer seal O-rings, 6 plunger bearings | WAT031790 | 8005-0912 |
| 1515 HPLC Pump 1525 HPLC Pump 510 HPLC Pump 515 HPLC Pump | Reference Valve Rebuild Kit | Contains 1 diaphragm for check valve, 1 gasket for check valve, 1 reference valve button | WAT025746 | 8005-0911 |
| 600 MultiSolvent Delivery System 610 PowerLine Isocratic Pump | Outlet Check Valve Rebuild Kit | Contains 2 ball and seat for outlet check valves, 2 polychlorotrifluoroethylene (PCTFE) inserts, 2 stainless steel cup filters (2 µm), 4 large PTFE washers, 2 small PTFE washers | WAT026014 | 8005-0528 |
| 510 HPLC Pump 515 HPLC Pump 600 MultiSolvent Delivery System 610 PowerLine Isocratic Pump LC Module 1 | Inlet Check Valve Rebuild Kit | Contains 2 ball and seat for inlet check valves, 2 retainer gaskets, 2 TFE washers, 2 PTFE washers, 2 PCTFE inserts | WAT060495 | 8005-0914 |
| Performance Maintenance Kits for Autosamplers | | | | |
| 717 Autosampler | 717 Autosampler Performance Maintenance Kit | Contains 1 seal pack replacement kit, 1 syringe (250 µL), 1 filter (2.3 x 11.5 in), 2 filters (2 x 7 in) | WAT052669 | 8005-0927 |

(Continued)

The cross references to the original equipment manufacturer (OEM) part numbers listed here serve as a recommendation that the Agilent CrossLab products are viable alternatives to OEM products. CrossLab products are compatible with the corresponding OEM instruments, although in some cases, the CrossLab products may have slightly different designs as compared to the OEM counterparts. All CrossLab supplies are backed by Agilent's 90-day money-back warranty.



2960/2965 PM kit, 8005-0915



515 pump PM kit, 8005-0913

Contact your Agilent Authorized Distributor or learn more at www.agilent.com/chem/CrossLabHPLC

Performance Maintenance Kits

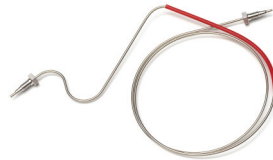
| Model | Description | Kit Contents | Similar to OEM Part No. | Agilent CrossLab Part No. |
|---|--|--|-------------------------|---------------------------|
| Performance Maintenance Kits for Rheodyne Valves | | | | |
| Rheodyne Injector, 3725(i) | Performance Maintenance Kit for Rheodyne 3725(i) Injector Valves | Contains 1 rotor seal (PEEK), 1 stator face assembly (PEEK), 1 isolation seal, 1 needle guide, 1 needle port cleaner, 1 hex key (5/64 in), 1 hex key (9/64 in) | 201000116 | 8005-0901 |
| Rheodyne Injector, 7010 | Performance Maintenance Kit for Rheodyne 7010 Injector Valves | Contains 1 isolation seal, 1 rotor seal (Vespel), 1 hex key (5/64 in), 1 hex key (9/64 in) | 201000117 | 8005-0902 |
| Rheodyne Injector, 7125 and 7126 | Performance Maintenance Kit for Rheodyne 7125 and 7126 Injector Valves | Contains 1 rotor seal (Vespel), 1 stator face assembly (PEEK/ceramic), 1 isolation seal, 1 needle guide, 1 needle port cleaner, 1 hex key (5/64 in), 1 hex key (9/64 in), instructions | 201000118 | 8005-0903 |
| Rheodyne Injector, 7725(i) | Performance Maintenance Kit for Rheodyne 7725(i) Injector Valves | Contains 1 stator face assembly (PEEK/ceramic), 1 rotor seal (Vespel), 1 isolation seal, 1 needle guide, 1 needle port cleaner, 1 hex key (5/64 in), 1 hex key (9/64 in), instructions | 201000119 | 8005-0904 |
| Rheodyne Injector, 7750E | Performance Maintenance Kit for Rheodyne 7750 Injector Valves | Contains 1 stator face assembly (PEEK/ceramic), 1 rotor seal (Vespel), 1 isolation seal, 1 hex key (9/64 in), instructions | 201000122 | 8005-0907 |
| Rheodyne Injector, 7750E-075 | Performance Maintenance Kit for Rheodyne 7750E-075 Valves | Contains 1 rotor seal (PEEK), 1 stator face assembly (PEEK), 1 isolation seal, 1 hex key (9/64 in), instructions | 201000125 | 8005-0908 |
| Rheodyne Injector, 8125 and 8126 | Performance Maintenance Kit for Rheodyne 8125 and 8126 Injector Valves | Contains 1 stator face assembly (PEEK/ceramic), 1 rotor seal (PEEK), 1 isolation seal, 1 needle guide, 1 needle port cleaner, 1 hex key (5/64 in), 1 hex key (9/64 in), instructions | 201000120 | 8005-0905 |
| Rheodyne Injector, 9125 and 9126 | Performance Maintenance Kit for Rheodyne 9125 and 9126 Injector Valves | Contains 1 stator face assembly (PEEK/ceramic), 1 rotor seal (Tefzel), 1 isolation seal, 1 needle guide, 1 needle port cleaner, 1 hex key (5/64 in), 1 hex key (9/64 in), instructions | 201000121 | 8005-0906 |



Rheodyne 7725(i) PM kit,
8005-0904



Rheodyne 9125 PM kit,
8005-0906



CrossLab capillary, stainless steel,
8005-0825



CrossLab capillary, PEEK,
8005-0812



CrossLab capillary,
stainless steel,
8005-0823

HPLC Capillaries, 1/pk

| Model | From | To | Material | OD (mm) | ID (mm) | Length (mm) | Fittings | Similar to OEM Part No. | Agilent CrossLab Part No. |
|--|---------------------------------|-------------------------|-----------------|---------|---------|-------------|--|-------------------------|---------------------------|
| 2690 Separations Module 2690D Dissolution Separations Module 2695 Separations Module 2695D Dissolution Separations Module | Pump | Autosampler | Stainless steel | 1.6 | 0.23 | 760 | With fittings, pre-swaged on both ends | WAT270975 | 8005-0824 |
| 2690 Separations Module 2690D Dissolution Separations Module 2695 Separations Module 2695D Dissolution Separations Module 2790 Separations Module 2795 Separations Module | Autosampler | Column Thermostat Valve | Stainless steel | 1.6 | 0.23 | 760 | With fittings, pre-swaged on both ends | WAT270979 | 8005-0825 |
| 2695 Separations Module 2695D Dissolution Separations Module | Autosampler | Column Thermostat Valve | PEEK | 1.6 | 0.13 | 6000 | With fittings, non pre-swaged | 430000922 | 8005-0812 |
| Alliance | Column Thermostat Valve | Column | Stainless steel | 1.6 | 0.23 | 3000 | No fittings | WAT026973 | 8005-0823 |
| Alliance | Column Thermostat Valve | Column | Stainless steel | 1.6 | 0.508 | 3000 | No fittings | WAT026804 | 8005-0826 |
| Alliance | Column Thermostat Valve | Column | Stainless steel | 1.6 | 1.02 | 3000 | No fittings | WAT026805 | 8005-0822 |
| Alliance | Column Thermostat Valve | Column | Stainless steel | 1.6 | 1.02 | 3000 | No fittings | WAT026805 | 8005-0822 |
| Alliance | Compression screws and ferrules | | | | | | | WAT025604 | 8005-0835* |

*This fitting is used with 8005-0823, 8005-0826, and 8005-0822

HPLC Fittings, Ferrules, and Unions

| Description | Unit | Similar to OEM Part No. | Agilent CrossLab Part No. |
|--|-------|-------------------------|---------------------------|
| Compression screw, stainless steel, 1/16 in od | 10/pk | WAT005070 | 8005-0837 |
| Compression screws and ferrules | 5/pk | WAT025604 | 8005-0835 |
| Union, stainless steel, 1/16 in od | 1/pk | WAT097332 | 8005-0836 |

The cross references to the original equipment manufacturer (OEM) part numbers listed here serve as a recommendation that the Agilent CrossLab products are viable alternatives to OEM products. CrossLab products are compatible with the corresponding OEM instruments, although in some cases, the CrossLab products may have slightly different designs as compared to the OEM counterparts. All CrossLab supplies are backed by Agilent's 90-day money-back warranty.

CrossLab Vials and Closures

This Quick Reference Guide includes a subset of Agilent's CrossLab Vial and Closure offering, along with a cross reference list. For a complete selection, please refer to the CrossLab Product Selection Guide (publication number 5991-1484EN) or visit the online selection tool at www.agilent.com/chem/selectvials

CrossLab Vials Cross Reference List

The cross references to the original equipment manufacturer (OEM) part numbers listed here serve as a recommendation that the CrossLab products are viable alternatives to OEM products. CrossLab products are compatible with the corresponding OEM instruments, although in some cases, the CrossLab products may have slightly different designs as compared to the OEM counterparts.

CrossLab Vials for Waters

| Similar to Waters Part No. | Agilent CrossLab Part No. | Similar to Waters Part No. | Agilent CrossLab Part No. | Similar to Waters Part No. | Agilent CrossLab Part No. |
|----------------------------|---------------------------|----------------------------|---------------------------|----------------------------|---------------------------|
| 186000842 | 8010-0557 | 186000307C | 8010-0542 | 186001133C | 8010-0554 |
| 186001420 | 8010-0563 | 186000838C | 8010-0553 | 186001134C | 8010-0556 |
| 186001421 | 8010-0565 | 186000839C | 8010-0555 | WAT025053C | 8010-0575 |
| 186001422 | 8010-0564 | 186000847C | 8010-0543 | WAT025054C | 8010-0574 |



Clear, 2 mL wide opening (9 mm) screw top glass vials, 8010-0015

2 mL Wide Opening (9 mm) Screw Top Glass Vials

| Description | Unit | Agilent CrossLab Part No. |
|----------------------|---------|---------------------------|
| Clear | 100/pk | 8010-0015 |
| Clear, write-on spot | 100/pk | 8010-0014 |
| | 1000/cs | 8010-0175 |
| Amber | 100/pk | 8010-0017 |
| Amber, write-on spot | 100/pk | 8010-0016 |
| | 1000/cs | 8010-0176 |



Wide opening screw top vials with write-on spot, 8010-0014

Screw Top Vials with Fixed Inserts

| | | |
|-----------------------------|--------|-----------|
| Clear, 300 µL insert volume | 100/pk | 8010-0008 |
| Amber, 300 µL insert volume | 100/pk | 8010-0009 |

Screw Caps for Wide Opening (9 mm) Vials

| Color | Septa Type | Unit | Agilent CrossLab Part No. |
|------------------------|------------------------|---------------|---------------------------|
| Blue | PTFE/silicone | 100/pk | 8010-0086 |
| | PTFE/silicone/PTFE | 100/pk | 8010-0087 |
| | Pre-slit PTFE/silicone | 100/pk | 8010-0078 |
| | Bonded PTFE/silicone | 100/pk | 8010-0077 |
| | PTFE lined | 100/pk | 8010-0080 |
| | Open top, no septa | 100/pk | 8010-0079 |
| Red | PTFE/silicone | 100/pk | 8010-0088 |
| | PTFE/silicone/PTFE | 100/pk | 8010-0089 |
| | Pre-slit PTFE/silicone | 100/pk | 8010-0082 |
| | Bonded PTFE/silicone | 100/pk | 8010-0081 |
| | Open top, no septa | 100/pk | 8010-0083 |
| | Orange | PTFE/silicone | 100/pk |
| | | 1000/cs | 8010-0186 |
| PTFE/silicone/PTFE | | 100/pk | 8010-0085 |
| | | 1000/cs | 8010-0187 |
| Pre-slit PTFE/silicone | | 100/pk | 8010-0075 |
| Bonded PTFE/silicone | | 100/pk | 8010-0074 |
| Open top, no septa | | 100/pk | 8010-0076 |



Orange screw caps with PTFE/silicone septa for wide opening (9 mm) vials, 8010-0084

To obtain an optimal fit and seal of any vial and closure, we strongly recommend buying an entire CrossLab vial assembly (including a vial, cap, and septum, as well as a vial insert if needed). Please avoid mixing and matching any CrossLab vials with any other brand of closures, or any CrossLab closures with any other brand of vials.

Contact your Agilent Authorized Distributor or learn more at www.agilent.com/chem/CrossLabHPLC

| 2 mL Standard Opening (8 mm) Screw Top Glass Vials | | |
|--|--------|---------------------------|
| Description | Unit | Agilent CrossLab Part No. |
| Clear | 100/pk | 8010-0011 |
| Clear, write-on spot | 100/pk | 8010-0010 |
| Amber | 100/pk | 8010-0013 |
| Amber, write-on spot | 100/pk | 8010-0012 |



Clear 2 mL standard opening (8 mm) screw top glass vials, 8010-0011

| Screw Caps for Standard Opening (8 mm) Vials | | | |
|--|------------------------|--------|---------------------------|
| Color | Septa Type | Unit | Agilent CrossLab Part No. |
| Blue | PTFE/silicone | 100/pk | 8010-0061 |
| | Pre-slit PTFE/silicone | 100/pk | 8010-0062 |
| | PTFE/silicone/PTFE | 100/pk | 8010-0063 |
| | PTFE/butyl | 100/pk | 8010-0064 |
| | Open top, no septa | 100/pk | 8010-0065 |
| Red | PTFE/silicone | 100/pk | 8010-0066 |
| | Pre-slit PTFE/silicone | 100/pk | 8010-0067 |
| | PTFE/silicone/PTFE | 100/pk | 8010-0068 |
| | PTFE/butyl | 100/pk | 8010-0069 |
| | Open top, no septa | 100/pk | 8010-0070 |
| Orange | PTFE/silicone | 100/pk | 8010-0056 |
| | Pre-slit PTFE/silicone | 100/pk | 8010-0057 |
| | PTFE/silicone/PTFE | 100/pk | 8010-0058 |
| | PTFE/butyl | 100/pk | 8010-0059 |
| | Open top, no septa | 100/pk | 8010-0060 |
| Black | PTFE/silicone | 100/pk | 8010-0054 |
| | Open top, no septa | 100/pk | 8010-0055 |



Orange screw caps with PTFE/silicone septa for standard opening vials, 8010-0056

| 4 mL (13 mm) Screw Top Glass Vials | | |
|------------------------------------|--------|---------------------------|
| Description | Unit | Agilent CrossLab Part No. |
| Clear | 100/pk | 8010-0020 |
| Amber | 100/pk | 8010-0021 |

| Screw Caps for 4 mL (13 mm) Vials | | | |
|-----------------------------------|--------------------|--------|---------------------------|
| Color | Septa Type | Unit | Agilent CrossLab Part No. |
| Black | Red PTFE/silicone | 100/pk | 8010-0095 |
| | Open top, no septa | 100/pk | 8010-0096 |



Black screw caps with red PTFE/silicone septa for 4 mL (13 mm) vials, 8010-0095

| 10 mL (22 mm) Screw Top Glass Vials | | |
|-------------------------------------|--------|---------------------------|
| Description | Unit | Agilent CrossLab Part No. |
| Clear | 100/pk | 8010-0563 |

| Screw Caps for 10 mL (22 mm) Vials | | | |
|------------------------------------|-------|--------|---------------------------|
| Septa Type | Color | Unit | Agilent CrossLab Part No. |
| No septa | Black | 100/pk | 8010-0565 |



CrossLab vial, screw top, 10 mL, 22 mm, clear, 8010-0563

| Septa for 10 mL (22 mm) Vials | | |
|-------------------------------|--------|---------------------------|
| Septa Type | Unit | Agilent CrossLab Part No. |
| PTFE/silicone | 100/pk | 8010-0564 |



CrossLab vial septa, 22 mm, PTFE/silicone, 8010-0564

To obtain an optimal fit and seal of any vial and closure, we strongly recommend buying an entire CrossLab vial assembly (including a vial, cap, and septum, as well as a vial insert if needed). Please avoid mixing and matching any CrossLab vials with any other brand of closures, or any CrossLab closures with any other brand of vials.

Contact your Agilent Authorized Distributor or learn more at www.agilent.com/chem/CrossLabHPLC

2 mL (11 mm) Crimp Top Glass Vials

| Description | Unit | Agilent CrossLab Part No. |
|----------------------|---------|---------------------------|
| Clear | 100/pk | 8010-0002 |
| Clear, write-on spot | 100/pk | 8010-0001 |
| | 1000/cs | 8010-0170 |
| Amber, write-on spot | 100/pk | 8010-0003 |
| | 1000/cs | 8010-0172 |

Crimp Top Vials with Fixed Inserts

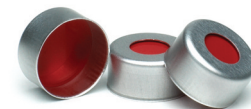
| | | |
|-----------------------------|--------|-----------|
| Clear, 300 µL insert volume | 100/pk | 8010-0006 |
| Amber, 300 µL insert volume | 100/pk | 8010-0007 |



Crimp top glass vials with write-on spot, 8010-0001

Crimp Caps with 11 mm Septa

| Cap Color | Septa Type | Unit | Agilent CrossLab Part No. |
|-----------------|------------------------|-----------------|---------------------------|
| Silver aluminum | PTFE/silicone/PTFE | 100/pk | 8010-0049 |
| | | 1000/cs | 8010-0182 |
| | PTFE/silicone | 100/pk | 8010-0050 |
| | | 1000/cs | 8010-0183 |
| | Pre-slit PTFE/Silicone | 100/pk | 8010-0582 |
| | PTFE/butyl | 100/pk | 8010-0051 |
| | Thin membrane rubber | PTFE/red rubber | 25/pk |
| 100/pk | | | 8010-0045 |
| | | 1000/cs | 8010-0181 |
| Blue aluminum | PTFE/red rubber | 100/pk | 8010-0046 |
| Green aluminum | PTFE/red rubber | 100/pk | 8010-0047 |
| Red aluminum | PTFE/red rubber | 100/pk | 8010-0048 |
| Gold aluminum | Magnetic | 100/pk | 8010-0052 |



Crimp caps with PTFE/silicone/PTFE 11 mm septa, 8010-0049



Magnetic crimp caps, 8010-0052

To obtain an optimal fit and seal of any vial and closure, we strongly recommend buying an entire CrossLab vial assembly (including a vial, cap, and septum, as well as a vial insert if needed). Please avoid mixing and matching any CrossLab vials with any other brand of closures, or any CrossLab closures with any other brand of vials.

Contact your Agilent Authorized Distributor or learn more at www.agilent.com/chem/CrossLabHPLC

2 mL (11 mm) Snap Top Glass Vials

| Description | Unit | Agilent CrossLab Part No. |
|----------------------|---------|---------------------------|
| Clear | 100/pk | 8010-0024 |
| Clear, write-on spot | 100/pk | 8010-0023 |
| | 1000/cs | 8010-0177 |
| Amber | 100/pk | 8010-0026 |
| Amber, write-on spot | 100/pk | 8010-0025 |
| | 1000/cs | 8010-0178 |



Snap top vials with write-on spot, 8010-0025

Snap Caps with 11 mm Septa

| Cap Color | Septa Type | Unit | Agilent CrossLab Part No. |
|--------------|------------------------------|---------|---------------------------|
| Clear | PTFE/red silicone | 100/pk | 8010-0104 |
| | PTFE/silicone/PTFE | 100/pk | 8010-0105 |
| | Pre-slit PTFE/white silicone | 100/pk | 8010-0106 |
| | Clear polyethylene membrane | 100/pk | 8010-0107 |
| Blue | PTFE/red silicone | 100/pk | 8010-0108 |
| | PTFE/white silicone | 100/pk | 8010-0112 |
| Green | PTFE/red silicone | 100/pk | 8010-0109 |
| Orange | PTFE/red silicone | 100/pk | 8010-0103 |
| | PTFE/red silicone | 1000/cs | 8010-0189 |
| | PTFE/white silicone | 100/pk | 8010-0111 |
| | Pre-slit PTFE/white silicone | 1000/cs | 8010-0190 |
| | Pre-slit PTFE/white silicone | 100/pk | 8010-0113 |
| Red | PTFE/red silicone | 100/pk | 8010-0110 |
| Polyurethane | | 100/pk | 8010-0115 |



Orange snap caps with PTFE/red silicone 11 mm septa, 8010-0103

1 mL (8 mm) Snap Top Shell Vial Convenience Packs, 100/pk

| Vial Type | Cap | Agilent CrossLab Part No. |
|-----------|---------------|---------------------------|
| Clear | Polypropylene | 8010-0574 |
| Amber | Polypropylene | 8010-0575 |

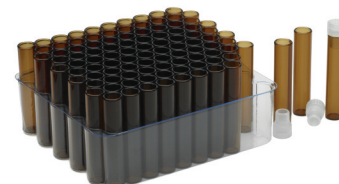
To obtain an optimal fit and seal of any vial and closure, we strongly recommend buying an entire CrossLab vial assembly (including a vial, cap, and septum, as well as a vial insert if needed). Please avoid mixing and matching any CrossLab vials with any other brand of closures, or any CrossLab closures with any other brand of vials.



CrossLab vial, snap top shell vial, 1 mL, 8 mm, clear, with polypropylene cap, 8010-0574



Streamline your lab's workflow, supply ordering, and productivity with Agilent CrossLab Supplies, now including pH electrodes and buffers. Find your supplies with our interactive selection tool at www.agilent.com/chem/SelectCrossLab



CrossLab vial, snap top shell vial, 1 mL, 8 mm, amber, with polypropylene cap, 8010-0575

Contact your Agilent Authorized Distributor or learn more at www.agilent.com/chem/CrossLabHPLC

| Polypropylene Vials | | | | |
|---|-------------------------|-----------------|---------|---------------------------|
| Description | Recommended Fill Volume | Max Fill Volume | Unit | Agilent CrossLab Part No. |
| Polypropylene, crimp/snap top | 250 µL | 440 µL | 100/pk | 8010-0158 |
| Polypropylene, crimp/snap top | 250 µL | 440 µL | 1000/cs | 8010-0193 |
| Polypropylene, crimp/snap top | 0.7 mL | 1 mL | 100/pk | 8010-0159 |
| Polypropylene, screw top | 250 µL | 440 µL | 100/pk | 8010-0161 |
| Polypropylene, screw top | 250 µL | 440 µL | 1000/cs | 8010-0194 |
| Polypropylene with glass insert, crimp/snap top | 250 µL | 350 µL | 100/pk | 8010-0160 |
| Polypropylene with glass insert, screw top | 250 µL | 350 µL | 100/pk | 8010-0162 |



CrossLab polypropylene vial, crimp/snap top, 8010-0158

| Microvolume Inserts for 8 mm Screw Top Vials | | | | |
|--|-------------------------|-----------------|--------|---------------------------|
| Description | Recommended Fill Volume | Max Fill Volume | Unit | Agilent CrossLab Part No. |
| Glass conical insert with polymer feet | 150 µL | 200 µL | 100/pk | 8010-0124 |
| Glass pulled-point insert | 150 µL | 200 µL | 100/pk | 8010-0125 |
| Flat bottom insert | 200 µL | 250 µL | 100/pk | 8010-0126 |



250 µL conical insert with polymer feet, 8010-0131

| Microvolume Inserts for 11 mm Crimp Top or 9 mm Screw Top Vials | | | | |
|---|-------------------------|-----------------|--------|---------------------------|
| Description | Recommended Fill Volume | Max Fill Volume | Unit | Agilent CrossLab Part No. |
| Conical insert with polymer feet | 250 µL | 330 µL | 100/pk | 8010-0131 |
| Pulled-point insert | 250 µL | 350 µL | 100/pk | 8010-0132 |
| Flat bottom insert | 400 µL | 440 µL | 500/pk | 8010-0136 |



250 µL pulled-point glass insert, 8010-0132

| Microvolume Inserts for 4 mL (13 mm) Screw Top Vials | | | | |
|--|-------------------------|-----------------|--------|---------------------------|
| Description | Recommended Fill Volume | Max Fill Volume | Unit | Agilent CrossLab Part No. |
| Pulled-point insert with flange | 250 µL | 350 µL | 100/pk | 8010-0558 |

To obtain an optimal fit and seal of any vial and closure, we strongly recommend buying an entire CrossLab vial assembly (including a vial, cap, and septum, as well as a vial insert if needed). Please avoid mixing and matching any CrossLab vials with any other brand of closures, or any CrossLab closures with any other brand of vials.

CrossLab Well Plates and Sealing Mats

Agilent CrossLab offers a range of polypropylene 96-well or 384-well plates with a variety of sealing options for collection of samples, storage, and use in autosamplers.

| Well Plates | | | | | | | | |
|----------------|------------------|---------------|-------------------|-----------------|------------|--------------|--------|---------------------------|
| Description | Well Volume (mL) | Material | Plate Height (mm) | Well Depth (mm) | Well Shape | Bottom Shape | Unit | Agilent CrossLab Part No. |
| 96-well plate | 0.2 | Polypropylene | 20.9 | 20.9 | Round | Conical | 50/pk | 8010-0532 |
| 96-well plate | 0.5 | Polypropylene | 26.5 | 21.6 | Round | Round | 56/pk | 8010-0533 |
| 96-well plate | 1.0 | Polypropylene | 39.1 | 37.1 | Round | Round | 32/pk | 8010-0534 |
| 96-well plate | 2.0 | Polypropylene | 44 | 41.85 | Round | Round | 32/pk | 8010-0536 |
| 384-well plate | 0.1 | Polypropylene | 14.4 | 11.7 | Square | Round | 120/pk | 8010-0538 |
| 384-well plate | 0.25 | Polypropylene | 22 | 19.5 | Square | Round | 60/pk | 8010-0539 |

| Sealing Mats and Accessories | | | |
|--|--------|---------------------------|--|
| Description | Unit | Agilent CrossLab Part No. | |
| Sealing mat for 0.2 mL 96-well plates, Thermoplastic Elastomers (TPE) | 5/pk | 8010-0577 | |
| Sealing mat for 0.5 mL and 1.0 mL 96-well plates, Thermoplastic Elastomers (TPE) | 50/pk | 8010-0535 | |
| Sealing mat for 2 mL 96-well plate, Ethylene Vinyl Acetate (EVA) | 50/pk | 8010-0537 | |
| Sealing tape for 384-well plate, Polyethylene | 100/pk | 8010-0540 | |
| Sealing foil, self adhesive, high transparency, for all plates, Polyethylene Terephthalate (PET) | 100/pk | 8010-0541 | |
| Sealing foil, self adhesive, for all plates, Polypropylene | 100/pk | 8010-0578 | |



96-well plate with removable sealing mat, 8010-0534

Contact your Agilent Authorized Distributor or learn more at www.agilent.com/chem/CrossLabHPLC

Put Agilent innovation and quality to work on a wide range of GCs and HPLCs in your lab

Agilent CrossLab is a growing portfolio of supplies critical to instrument performance and productivity, regardless of the instrument manufacturer. They are backed by our risk-free, compatibility warranty for your confidence, not compromise. In the unlikely event of a problem, we guarantee:

- 90-day refund on supplies
- A technical support consultation
- Free instrument repair or service if required

GC supplies

- Autosampler syringes
- Column ferrules
- Column nuts
- Inlet liners with Agilent Original Deactivation
- Liner O-rings
- Inlet liners with Ultra Inert Deactivation
- Inlet septa

Electrochemistry supplies

- pH electrodes
- pH buffer solutions
- pH reference solutions
- And more

Plus, we now offer Agilent CrossLab services – a portfolio of service solutions designed to drive productivity and efficiency across your lab.

- Multi-vendor repair and maintenance
- Compliance
- Laboratory relocation services

HPLC supplies

- Autosampler syringes
- Column ferrules
- Column nuts
- Inlet liners with Agilent Original Deactivation
- Liner O-rings
- Inlet liners with Ultra Inert Deactivation
- Inlet septa

General supplies

- Well plates and sealing mats
- Autosampler vials and closures

Learn more:

www.agilent.com/chem/CrossLab

Select products with interactive guide:

www.agilent.com/chem/SelectCrossLab

Buy online:

www.agilent.com/chem/CrossLabstore

Find an Agilent Customer Center or
Agilent Authorized Distributor in your country:

www.agilent.com/chem/contactus

Information, descriptions, and specifications in this publication are subject to change without notice.

© Agilent Technologies, Inc. 2014

Printed in Canada March 27, 2014

5991-2268EN



Agilent Technologies