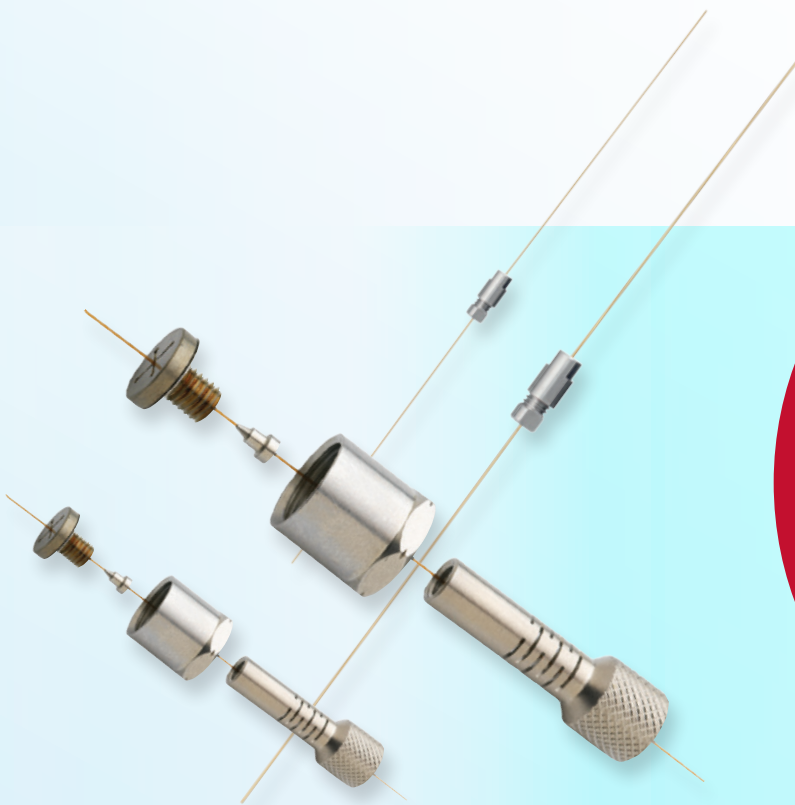


Simplify Your GC Connections



GC Connections

- Chemically inert
- Superb operational stability
- Low dead volume
- Easy to install and leak-free

GC Connections

Simplify Your GC Connections

The Importance of GC Connections

Currently available connectors suffer from issues with reliability, robustness, excessive dead volumes and inertness, leading to poor chromatography and instrument down time.

SGE Analytical Science GC Connections are designed to minimize your time spent on installation. The range includes:



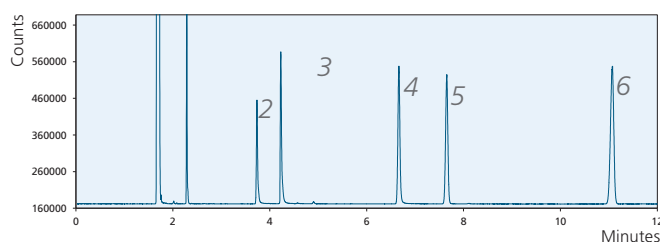
Enhanced Chromatography Features

- **Chemically inert**

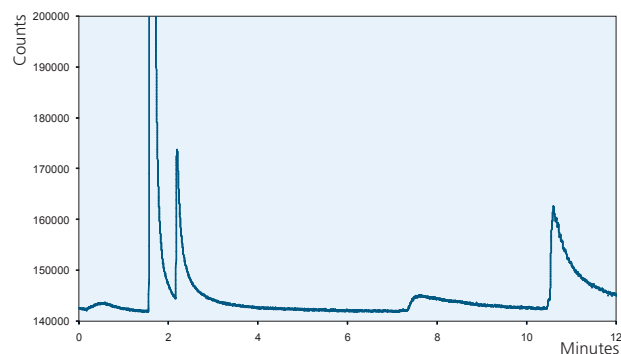
Enabled by SGE surface chemistry expertise, each metal surface is treated to ensure optimized chromatography.

Column: BPX5 30 m x 0.25 mm ID x 0.25 μm (P/N 054101)
Column Temperature: 140 °C
FID Temperature: 380 °C

Injector Temperature: 240 °C
Sample: 1 ng on-column of (1) n-Decane (2) 4-chlorophenol (3) n-Decylamine (4) Undecanol (5) Bi phenyl (6) Pentadecane



a) Column only.



b) Column with metal connector without special deactivation.

Figures a and b: Impact of non-deactivated metal surfaces on chromatography: Lost peaks and poor resolution.

- **Superb operational stability**

All SGE GC Connections are manufactured from high grade stainless steel, and have minimal thermal mass, ensuring there is minimal thermal lag during use. The use of stainless steel also means there is no practical limit to their maximum temperature, the only limitation is the temperature rating of the GC column.

- **Low dead volume**

SilTite FingerTite and SilFlow FingerTite ferrules used in SGE GC Connections result in low dead volume fittings giving you optimal peak shapes.

- **Easy to install and leak-free**

SGE GC Connections are designed with FingerTite fittings that are easy to set up and can be tightened using finger force to achieve a perfect, reliable seal, even for the most sensitive MS systems – no wrenches required!

SilTite μ -Union

The SilTite μ -Union is a connector for GC Capillary columns. It is useful for connecting a pre-column or a guard column. This tiny connection will make a big difference to your chromatography!

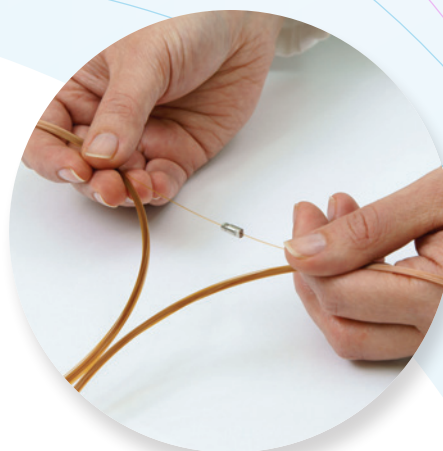
Low thermal mass: 9 mm in length and mass <0.5 g.

Available in kits to connect a range of columns from 0.1 mm ID through to 0.53 mm ID.

Kits contain:

- 5 x ferrules
- 2 x union fittings
- Installation jigs
- Installation instructions

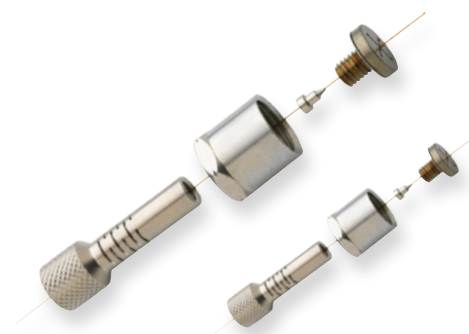
The SilTite μ -Union comes fitted standard when you order an SGE GC Capillary column with integrated guard (5 m). Just add SGXX to the end of the column part number where XX is the column ID e.g. 054101SG32 for a 0.32 mm ID guard on column part number 054101.



SilTite FingerTite Ferrules - Injector and Detector

- The next generation ferrule system for gas chromatography systems (Agilent, Thermo, PerkinElmer, Bruker/Varian and Shimadzu).
- Simplifies GC column installation.
- Reduces background noise in sensitive MS applications.
- Available in injector / detector or detector only kits.

	100 % Graphite	Graphite Vespel®	SilTite FingerTite
Mechanical Strength	Soft	Hard	Hard
Temperature Limit	450 °C	350 °C	No Practical Limit
Grip strength on column	Soft	Moderate	Strong
Doesn't need retightening after installation	✓	X	✓
Ideal for GC-MS applications (minimal porosity)	X	✓	✓
No tools required for installation and removal	X	X	✓
Permanent positioning of ferrule	X	X / ✓	✓
No deterioration	X	X	✓
Cannot break the capillary column with over-tightening	X	X	✓
No column creep	X	X	✓
Chemically inert	X	X	✓



The SilTite FingerTite ferrule requires a unique adapter to enable the finger force connection. Purchase one of the starter kits with the corresponding adapters for your system, complete the one-off 5 minute installation using the instructions provided, and you are ready to go!

GC Connections

Simplify Your GC Connections

SGE Analytical Science (SGE) is a world renowned brand for components and consumables used in scientific analysis.

Primarily in the field of scientific glass engineering for liquid handling and separation science, since its beginnings in 1960, SGE has become the global market leader in niche areas such as autosampler syringes and GC inlet liners.

Completing the transition into Trajan after acquisition in 2013, SGE products make up a solid foundation of Trajan's portfolio and will continue to be created and supported by Trajan customer service and distribution networks worldwide.

For more information visit www.sge.com or contact techsupport@sge.com.



Approved Distribution Partner