

The Smart Alternative



SiLTite™ FingerTite GC Ferrules

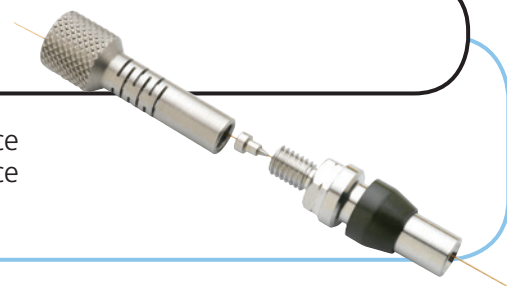
- Easy
- Reliable
- Leak free
- No tools required



SilTite FingerTite is the next generation ferrule system for gas chromatography systems delivering an easy, leak free installation for capillary columns without the use of any tools.

What Is SilTite FingerTite?

It's a GC ferrule that has been designed to be installed only with the force of your fingers (no tools required) delivering an easy, leak and maintenance free seal.



How Is It a 'Next Generation' Connection?

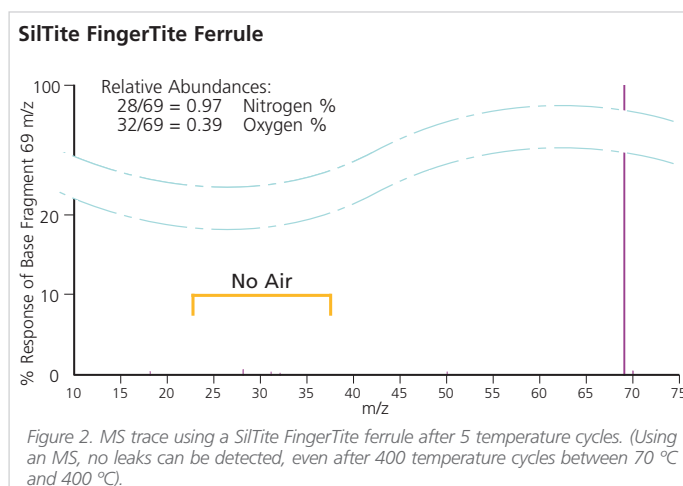
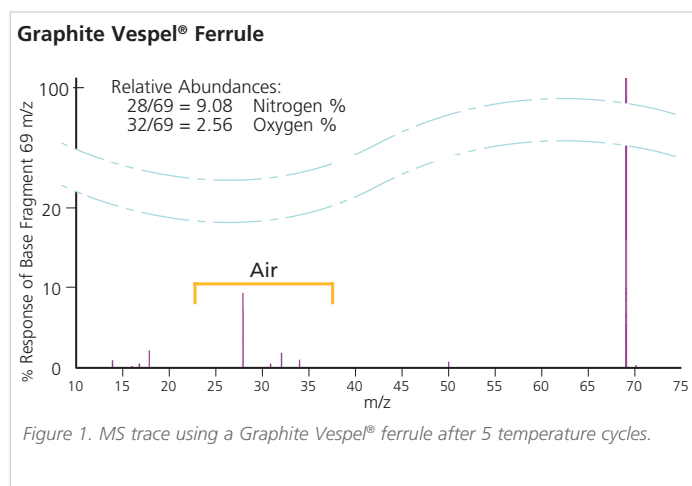
| | 100 % Graphite | Graphite Vespel® | SilTite FingerTite |
|--|----------------|------------------|--------------------|
| Mechanical strength | Soft | Hard | Hard |
| Temperature limit | 450 °C | 350 °C | No practical limit |
| Grip strength on column | Soft | Moderate | Strong |
| Doesn't need retightening after installation | ✓ | x | ✓ |
| Ideal for GC-MS applications (minimal porosity) | x | ✓ | ✓ |
| No tools required for installation and removal | x | x | ✓ |
| Permanent positioning of ferrule | x | x / ✓ | ✓ |
| No deterioration | x | x | ✓ |
| Cannot break the capillary column with over-tightening | x | x | ✓ |
| No column creep | x | x | ✓ |
| Chemically inert | x | x | ✓ |

Who Will Benefit From This Product?

If you are running a capillary column equipped gas chromatography system, SilTite FingerTite will simplify your column installation process giving you less hassle and more time for chromatography.

GCMS users

SilTite FingerTite has been developed with the unique, leak and air free properties of SilTite ferrules, resulting in superior air tightness to reduce background noise in sensitive MS applications so you can use them with confidence.



How Do I Install SilTite FingerTite?

The SilTite FingerTite ferrule requires a unique adapter to enable the finger force connection. Purchase one of the following starter kits with the corresponding adapters for your system, complete the once off 5 minute install using the instructions provided and you are ready to go!

The system requires no permanent instrument modifications, so if you need to switch back to conventional connections this can be done quickly and easily.

Frequently Asked Questions

Q1 Can I reuse the ferrules?

A1 Once the SilTite FingerTite ferrule is crimped onto the tubing using the ferrule installation tool, the fitting is permanent. However, the column can be removed and reinserted multiple times without tools.

Q2 Can I break my column if overtighten the nut?

A2 No - with the SilTite FingerTite system you cannot generate enough force with your fingers to break the column. Never use pliers or any other tool on the nut or you will possibly damage the adapter as well as break the column.

Q3 Can I touch the nut even when the oven is at 200 °C?

A3 No - the nut will be at the oven temperature so it will be too hot to touch. However, the nut is designed to dissipate the heat from the injector/detector/transfer line, so that when the oven is cool you can change the column without waiting for the injector/detector to cool down. For Mass Spectrometers always follow the manufacturer's recommendations to vent the system.

Q4 Can I reuse the SilTite FingerTite nuts?

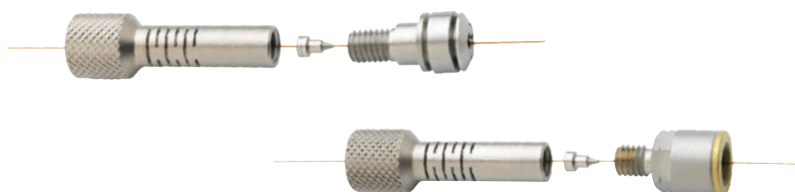
A4 Yes, the nuts can be reused although the nuts will be permanently fixed to the column when the ferrule is in place. Spare nuts can be purchased if more are required.

Q5. What's included in the starter kit?

A5 Each starter kit includes all the parts necessary to convert one GC system (one injector and one detector) to the SilTite FingerTite system suitable for installing 0.1 - 0.25 mm ID capillary columns. In addition there are five matching SilTite FingerTite nuts, one packet (10 ferrules) of 0.4 mm ID SilTite FingerTite ferrules and a ferrule install tool which allows you to seat the ferrule in the correct position on the capillary column.

Q6 Can I use any dimension of GC capillary column?

A6 SilTite FingerTite is suitable for any GC capillary column of nominal ID 0.1 - 0.25 mm (0.4 mm ID SilTite FingerTite ferrule) and 0.32 mm (0.5 mm ID SilTite FingerTite ferrule).



| Description | Part Number |
|---------------------------------------|--------------------------|
| SilTite FingerTite Agilent | |
| INJ / FID Starter Kit | 073610 |
| INJ / MS Starter Kit | 073612 |
| INJ Base Seal Pk 2 | Replacement Items 073640 |
| Capillary Adaptor | 0736101 |
| Injector | 0736104 |
| FID Detector | 0736103 |
| MS Adaptor | 0736102 |
| SilTite FingerTite Thermo | |
| INJ / DET Starter Kit | 073614 |
| INJ / MS Starter Kit | 073616 |
| INJ/GC-MS ISQ Starter Kit 0.4 | 073615 |
| SilTite FingerTite Varian | |
| INJ / FID Starter Kit | 073618 |
| INJ / MS Starter Kit | 073619 |
| SilTite FingerTite Shimadzu | |
| 2010 INJ / FID Starter Kit | 073620 |
| 2010 INJ / MS Starter Kit | 073621 |
| 17a INJ / FID Starter Kit | 073628 |
| 17a INJ / MS Starter Kit | 073629 |
| SilTite FingerTite PerkinElmer | |
| INJ / FID Starter Kit | 073622 |
| INJ / MS Starter Kit | 073623 |
| SilTite FingerTite | |
| Starter Kit 0.5* | 0736105 |
| Starter Kit 0.4* | 0736100 |
| Ferrule 0.4 mm Pk10 | Replacement Items 073630 |
| Ferrule 0.5 mm Pk10 | Replacement Items 073631 |
| Blanking Ferrule Pk 2 | Replacement Items 073633 |
| Female Nut Pk 5 | Replacement Items 073636 |

* 0.4 and 0.5 Starter Kits include 10 ferrules for either 0.1 - 0.25 mm ID capillary columns (0.4 Kit) or 0.32 mm ID capillary columns (0.5 Kit) plus 5 SilTite™ FingerTite nuts and the ferrule install tool.

Distributor Stamp

AUSTRALIA & PACIFIC REGION

SGE Analytical Science Pty Ltd
Toll Free: 1800 800 167
Tel: +61 (0) 3 9837 4200
Fax: +61 (0) 3 9874 5672
Email: support@sge.com

JAPAN

SGE Japan Inc
Tel: +81 45 222 2885
Fax: +81 45 222 2887
Email: japan@sge.com

EUROPE

SGE Europe Ltd
European Head Office
Toll Free: 00800 2790 8999
Toll Free Fax: 00800 2626 2609
Tel: +44 1908 568 844
Fax: +44 1908 566 790
Tel France: +33 1 69 29 80 90
Fax France: +33 1 69 29 09 25
Tel Germany: +49 (0) 6155 / 60746 0
Fax Germany: +49 (0) 6155 / 60746 50
Email: europe@sge.com

UNITED STATES OF AMERICA

SGE Incorporated
Toll Free: (800) 945 6154
Tel: +1 512 837 7190
Fax: +1 512 836 9159
Email: usa@sge.com

