

SOLA μ for pre-analysis sample concentration

Jon Bardsley, Ken Meadows, Thermo Fisher Scientific, Runcorn, UK

Key Words

SOLA μ , micro elution, reproducibility, matrix effects, SPE, no dry down, niflumic acid, sensitivity, sample concentration

Abstract

This application note demonstrates the use of Thermo Scientific™ SOLA μ ™ SPE product to enhance sample pre-concentration prior to analysis. Additional benefits include reduced workflow and stability for analytes susceptible to loss or degradation during evaporation and reconstitution. The use of a Thermo Scientific™ Accucore™ HPLC column provided fast and efficient separation without the need for an ultra high pressure system. MS/MS detection was performed on a Thermo Scientific™ TSQ Vantage™ mass spectrometer.

Introduction

Despite advances in analytical detection technology, achieving required limits of sensitivity can still be an issue for many bioanalytical laboratories. In order to improve limits of detection analysts are looking to sample preparation in order to pre-concentrate their sample prior to analysis.

Traditional scale SPE helps to clean up the sample to minimize matrix effects, however in order to pre concentrate the sample a lengthy dry down and reconstitution step needs to be employed. This process is not only time consuming but can have a detrimental effect on the recovery of the analyte due to volatility or non specific binding.

Thermo Scientific™ SOLA μ ™ allows users to pre-concentrate the sample up to 20 times prior to injection, allowing greater limits of sensitivity to be achieved whilst maintaining a high level of analyte recovery, accuracy and precision.

SOLA μ provides reproducibility, robustness and ease of use at low elution volumes by utilizing the revolutionary Thermo Scientific™ SOLA™, Solid Phase Extraction (SPE) technology. This removes the need for frits delivering a robust, reproducible format which ensures highly consistent results at low elution volumes.



SOLA μ delivers:

- Lower sample failures due to high reproducibility at low elution volumes
- Increased sensitivity due to lower elution volumes
- The ability to process samples which are limited in volume
- Improved stability of bio-molecules by reduction of adsorption and solvation issues

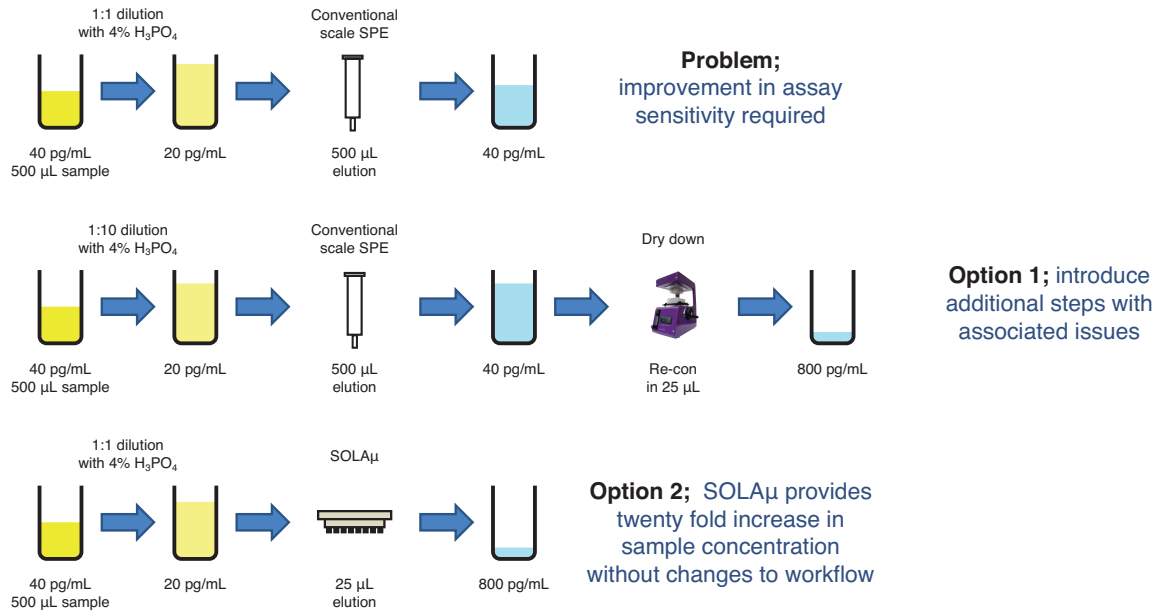


Figure 1: Summary of workflow required to achieve a twenty-fold increase in sample concentration prior to analysis without altering the workflow or compromising assay performance

Experimental Details

Consumables		Part Number
Fisher Scientific™ LCMS grade water		10777404
Fisher Scientific™ LCMS grade methanol		10653963
Fisher Scientific™ Analytical grade formic acid		10559570
Sample Handling Equipment		Part Number
Liquid handling hardware:		
SPE hardware:	Thermo Scientific™ HyperSep™ 96 well plate vacuum manifold	60103-351
	Vacuum pump, european version	60104-241
Sample handling:	Thermo Scientific™ 96 well square well microplate	60180-P212
	Thermo Scientific™ WebSeal™ mat	60180-M122
Sample Pretreatment		
500 µL of human plasma diluted 1:1 with 4% phosphoric acid.		
Sample Preparation		Part Number
Compound(s):	Niflumic acid, niflumic acid d5 (IS)	
Matrix:	Human plasma	
	SOLAµ WAX 2 mg/1 mL 96 Well Plate	60209-005
Condition:	200 µL methanol	
Equilibrate:	200 µL 4% phosphoric acid	
Load:	Apply sample at 0.5 mL/min	
Wash:	200 µL 25 mM ammonium acetate (pH4)	
	200 µL 70% methanol (pH4)	
Elute:	2 × 12.5 µL 50/50 methanol/acetonitrile with 2% ammonia	
Direct injection of eluent		

Separation Conditions		Part Number
Instrumentation:	Thermo Scientific™ Dionex™ UltiMate™ 3000 RSLC system	
Column:	Thermo Scientific™ Accucore™ RP-MS HPLC column 50 mm x 2.1 mm 2.6 µm	17626-052130
Guard column:	Thermo Scientific™ Accucore™ RP-MS Defender™ guard cartridge	17626-012105
	Thermo Scientific™ Uniguard™ drop-in guard holder	852-00
Flow rate:	750 µL/min	
Run time:	3 min	
Column temperature:	30 °C	
Injection details:	2 µL full loop injection	
Injection wash solvent 1:	Water	
Injection wash solvent 2:	45:45:10 (v/v/v) propan-2-ol / acetonitrile / acetone (with 5% Ammonia)	
Mobile phase A:	Water with 0.1% formic acid	
Mobile phase B:	Acetonitrile with 0.1% formic acid	

Gradient Conditions

Time (min)	%A	%B
0.0	70	30
2.0	10	90
2.01	70	30
3	70	30

MS Conditions

Instrumentation:	Thermo Scientific™ TSQ Vantage™ triple stage quadrupole mass spec
Ionization conditions	HESI
Polarity	+ive
Spray voltage (V)	3000
Vaporiser temperature (°C)	475
Sheath gas pressure (Arb)	50
Aux gas pressure (Arb)	60
Capillary temp (°C)	300
Collision pressure (mTorr)	1.5
Scan time (s)	0.02
Q1 (FWHM)	0.7
Q3 (FWHM)	0.7

Compound	Parent (m/z)	S-Lens (V)	Product (m/z)	Collision Energy (V)
Niflumic Acid	283.0	115	265.0	22
Niflumic Acid d5 (IS)	288.8	115	271.1	22

Data processing

Software:	Thermo Scientific™ LC QUAN™ version 2.6 quantitative software
-----------	---

Results

By loading 500 μL of sample onto the SOLA μ plate and eluting in a total of 25 μL a twenty-fold concentration of the analyte was achieved. The results demonstrate that even with low elution volume, high levels of accuracy, precision, recovery and sample cleanliness were achieved.

The assay gave a linear dynamic range from 40 to 40000 pg/mL with an r^2 coefficient of 0.998 (Figure 2, Table 1). The chromatography for the limit of quantitation sample at 40 pg/mL is significantly above the acceptable signal to noise limit (Figure 3).

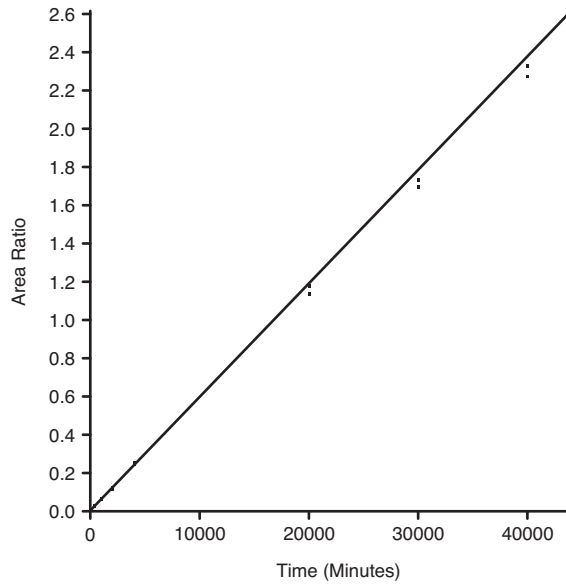


Figure 2: niflumic acid linearity over the dynamic range 40-40000 pg/mL

Standard	Specified Concentration (ng/mL)	Calculated Concentration (ng/mL)	Accuracy (% difference)	Precision (%RSD n=18)
S1	40.0	39.7	-0.775	-
S2	400	429	7.37	-
S3	1000	1006	0.592	-
S4	2000	2000	0.00	-
S5	4000	4112	2.81	-
S6	20000	19445	-2.78	-
S7	30000	28809	-3.97	-
S8	40000	38702	-3.25	-
QC L	400	420	5.00	1.31
QC M	20000	19200	4.00	0.77
QC H	30000	28800	4.00	1.06

Table 1: niflumic acid accuracy data for the calibration range 40 to 40000 pg/mL

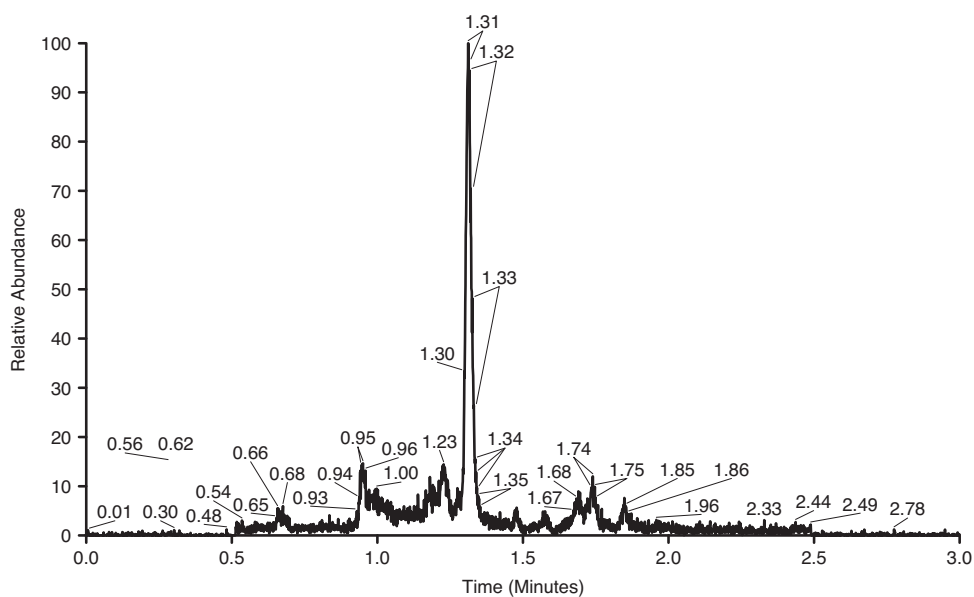


Figure 3: Example chromatogram 40 pg/mL niflumic acid

Low, mid and high QC samples were prepared at concentrations of 400, 20000 and 30000 pg/mL respectively. Table 1 shows a good level of accuracy at all QC levels. Table 2 shows reproducibility data for replicate extractions (n=18) at both high and low QC levels.

	Precision Data for Niflumic Acid Peak Area Ratio (%RSD)
Low QC	1.31
High QC	1.06

Table 2: Precision data niflumic acid at Low QC 40 pg/mL and High QC 30000 pg/mL (n=18)

	Recovery of Niflumic Acid (%)
Low QC	89.9
High QC	94.0

Table 3: Percentage recovery for niflumic acid at Low QC 40 pg/mL and High QC 30000 pg/mL

	Matrix Effects (%)
Low QC	8.63
High QC	3.21

Table 4: Percentage matrix effects for niflumic acid at Low QC 40 pg/mL and High QC 30000 pg/mL

Analyte recovery was shown to be greater than 89.9% by comparison to post extraction fortified blank samples (refer to Table 3). Post extraction fortified blank samples were also compared against pure reference standards to demonstrate matrix effects which were calculated at less than 9% at both high and Low QC levels (refer to Table 4).

Conclusion

This application note demonstrates the advantages of SOLA μ for sample concentration prior to analysis while maintaining high levels of precision, accuracy, recovery and sample cleanliness.

By loading a sample volume of 500 μ L and eluting in a volume of 25 μ L it is possible to decrease the lower limit of quantitation by a factor of twenty without the need for lengthy evaporation procedures that may compromise analytical results.

SOLA μ provides users with the ability to:

- Achieve a high level of confidence in analytical results at low elution volumes due to high reproducibility at low elution volumes
- Increase sensitivity by increasing sample loading and reducing elution volumes
- Improve productivity by removing requirement for lengthy evaporation and reconstitution

thermoscientific.com/sola-spe

© 2014 Thermo Fisher Scientific Inc. All rights reserved. All trademarks are the property of Thermo Fisher Scientific and its subsidiaries. This information is presented as an example of the capabilities of Thermo Fisher Scientific products. It is not intended to encourage use of these products in any manners that might infringe the intellectual property rights of others. Specifications, terms and pricing are subject to change. Not all products are available in all countries. Please consult your local sales representative for details.

USA and Canada +1 800 332 3331
Australia 1300 735 292 (free call domestic)
China 800 810 5118 (free call domestic)
400 650 5118
France +33 (0)1 60 92 48 34
Germany +49 (0) 2423 9431 20 or 21

India +91 22 6742 9494
+91 27 1766 2352
Japan 0120 753 670 (free call domestic)
0120 753 671 fax
United Kingdom +44 (0) 1928 534 110
New Zealand 0800 933 966 (free call domestic)
Singapore +65 6289 1190
All Other Enquiries +44 (0) 1928 534 050

Technical Support
For advice and support,
please visit our website:
www.thermoscientific.com/chromexpert

Thermo
SCIENTIFIC

A Thermo Fisher Scientific Brand