

U(HPLC) columns

Accucore columns

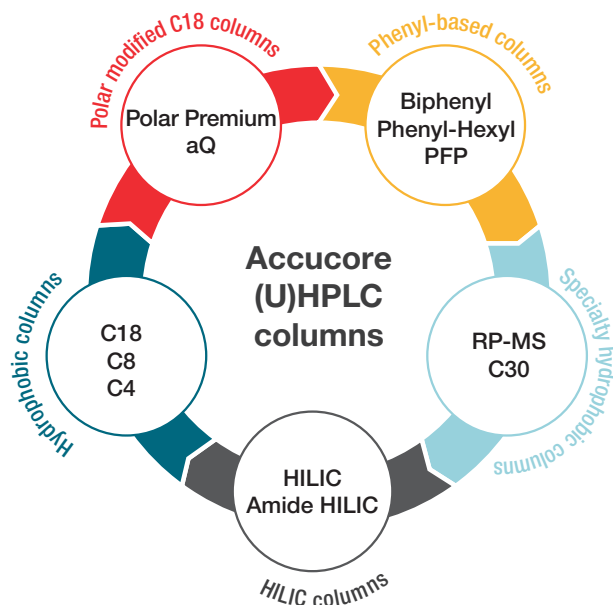
Solid core silica particles for greater speed and resolution

High efficiently. High throughput. High resolution.

Based on Core Enhanced Technology, Thermo Scientific™ Accucore™ HPLC and UHPLC columns provide fast separations with high throughput, allowing you to maximize your investment. Available in a wide range of phases to meet all your separation needs, Accucore columns are exceptionally rugged and easy to use.

Benefits

- High efficiency separation on rugged, solid core, superficially porous particles
- Fast and easy analyses with a wide selection of chemistries
- Increased sensitivity on a standard HPLC system
- Compatible with almost any instrument



Discover high-throughput columns for rapid (U)HPLC separations

Column phases	Column	Description
Hydrophobic	C18, C8, C4	Reversed phase chemistry for separation via hydrophobic interactions. Stationary phases with longer carbon chains provide longer retention times and greater hydrophobicity
Polar-modified C18	Polar Premium, aQ	Good for the separation of acidic and basic compounds via reversed phase chromatography using an aqueous mobile phase
Phenyl-based	Biphenyl, Phenyl-Hexyl, PFP	Orthogonal selectivity to traditional hydrophobic phases that utilizes aromatic interactions to achieve challenging separations of aromatic and polar compounds
Specialty hydrophobic	RP-MS, C30	Alternative selectivity to C18 for hydrophobic retention and the geometric separation of structural isomers
HILIC	HILIC, Amide HILIC	Ideal for retaining and separating polar compounds based on polarity differences and affinity for a polar stationary phase

Ordering information

Phase name	1.5 µm	2.6 µm	4 µm	Pore size (Å)	Carbon load (%)	Surface area (m ² /g)	USP
Accucore C18	–	√	–	80	9	130	L1
Accucore Vanquish C18+	√	–	–	80	6.5	130	L1
Accucore XL C18	–	–	√	80	7	130	L1
Accucore C8	–	√	–	80	9	130	L7
Accucore XL C8	–	–	√	80	4	130	L7
Accucore 150-C4	–	√	–	150	2	80	L26
Accucore aQ	–	√	–	80	9	130	L1
Accucore Polar Premium	–	√	–	80	8	130	L60
Accucore RP-MS	–	√	–	80	7	130	L1
Accucore C30	–	√	–	80	5	130	L62
Accucore Biphenyl	–	√	–	80	6	130	L11
Accucore Phenyl-Hexyl	–	√	–	80	5	130	L11
Accucore PFP	–	√	–	80	5	130	L43
Accucore Phenyl-X	–	√	–	80	6	130	–
Accucore HILIC	–	√	–	80	–	130	L3
Accucore 150-Amide-HILIC	–	√	–	150	–	80	–
Accucore Urea HILIC	–	√	–	80	–	130	–

Learn more at thermofisher.com/accucore